

# eASY.KSEI – KSEI Electronic General Meeting System



**2nd ACG Junior Staff Workshop**

November 26<sup>th</sup> 2020



## Function

Electronic General Meeting of Shareholders Application or eASY.KSEI (KSEI Electronic General meeting System) is an electronic application to support **information distribution, implementation, and reporting of GMS**, as well as **the use of Shareholders' voting rights in the GMS**.



## OJK Support

OJK issued a circular letter declaring state of emergency status due to Covid-19 pandemic and allowing the implementation of e-AGM/e-EGM

## Purpose

The purpose of the eASY.KSEI Application is to make it easy for **Shareholders** to participate in every GMS **without** the need to be **physically present**.



## Implementation

e-Proxy\*: Replacement of physical Power of Attorney by **an electronically submitted Power of Attorney** through eASY.KSEI

e-Voting\*\*: Attendance of **GMS via online platform** using **live streaming** technology allowing GMS participants to be able to vote electronically on the day of the GMS.



\* : Went Live on April 20<sup>th</sup> , 2020

\*\* : Will be Implemented early 2021

**March, 3<sup>rd</sup>  
2020**

## 1<sup>st</sup> User Meeting & System Demo

Discussion of KSEI Regulation related to eASY.KSEI implementation & System demo

**March, 19<sup>th</sup> 2020**

## eASY.KSEI System UAT

Internal UAT & Final test to make sure all eASY.KSEI functions are running well. The Final testing period is **March 19<sup>th</sup> - April 18<sup>th</sup> 2020**

**April, 3<sup>rd</sup> 2020**

## KSEI Circular Letter

Implementation of the KSEI Electronic General Meeting System (eASY.KSEI) Facility as an e-Proxy Authorization Mechanism for GMS

**April, 20<sup>th</sup> 2020**

## eASY.KSEI: Live & OJK Regulation

- 32 Issuer Announced their GMS in the first week after eASY.KSEI went Live
- The first Issuer to held GMS via eASY.KSEI platform was on **May 13<sup>th</sup>, 2020**
- OJK Issued **POJK 15 2020**

## OJK Circular Letter

Regarding the Easing of Requirements on General Meeting of Shareholders (GMS) Reporting and Implementation.

**March, 18<sup>th</sup> 2020**

## eASY.KSEI Sharing session & Onsite Training

- 98 Issuers
  - 23 Securities Company
  - 8 Custodian Bank
  - 4 Registrar
- The Onsite Training period ends on **April 9<sup>th</sup>, 2020**

**March 23<sup>rd</sup>**

## Announcement of Large-Scale Social Restrictions (PSBB)

State Government of DKI Jakarta announced the implementation of PSBB effective as of April 10<sup>th</sup>, 2020 until April 23<sup>rd</sup>, 2020.

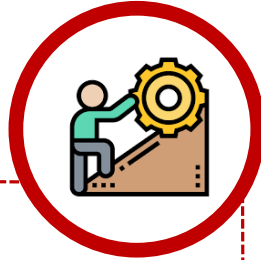
**April 9<sup>th</sup> 2020**

- E-Voting Platform UAT
- CR Implementation
- System Hands-on (KSEI Participants)
- E-Voting System Deployment & Live

**Q4 2020**

**Q1 2021**

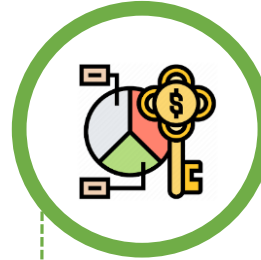
## Challenges



**Short implementation timeline due to Covid-19 pandemic**  
eASY.KSEI is expected to assist issuers in conducting GMS virtually due to the pandemic. Preparation of the implementation in 2 months including system readiness, system UAT, system manual, workaround solutions.

**System familiarisation and training**  
Training to various users: Custodian Banks, Securities Companies, Registrars, Issuers.

## Key Success Factors



**Covid-19 Pandemic**  
Due to pandemic, government issued regulations restricting mass physical meetings, increasing the needs of virtual meeting application.

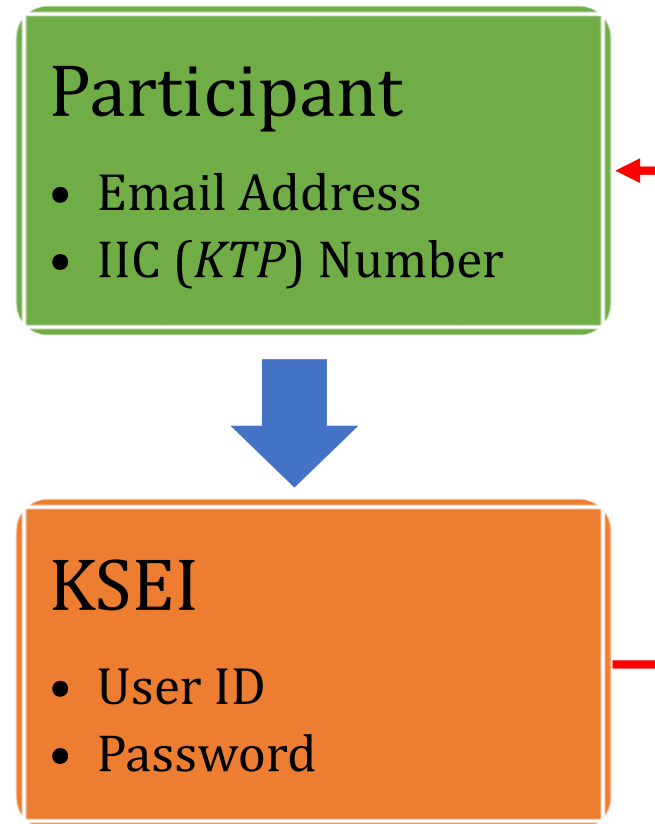
**Supports from OJK**  
Mandatory use of eASY.KSEI for GMS supported by fast issuance of regulations.

**Supports from other stakeholders**  
Awareness of the importance of social distancing is very high, thus it resulted in strong support of virtual meeting application implementation.

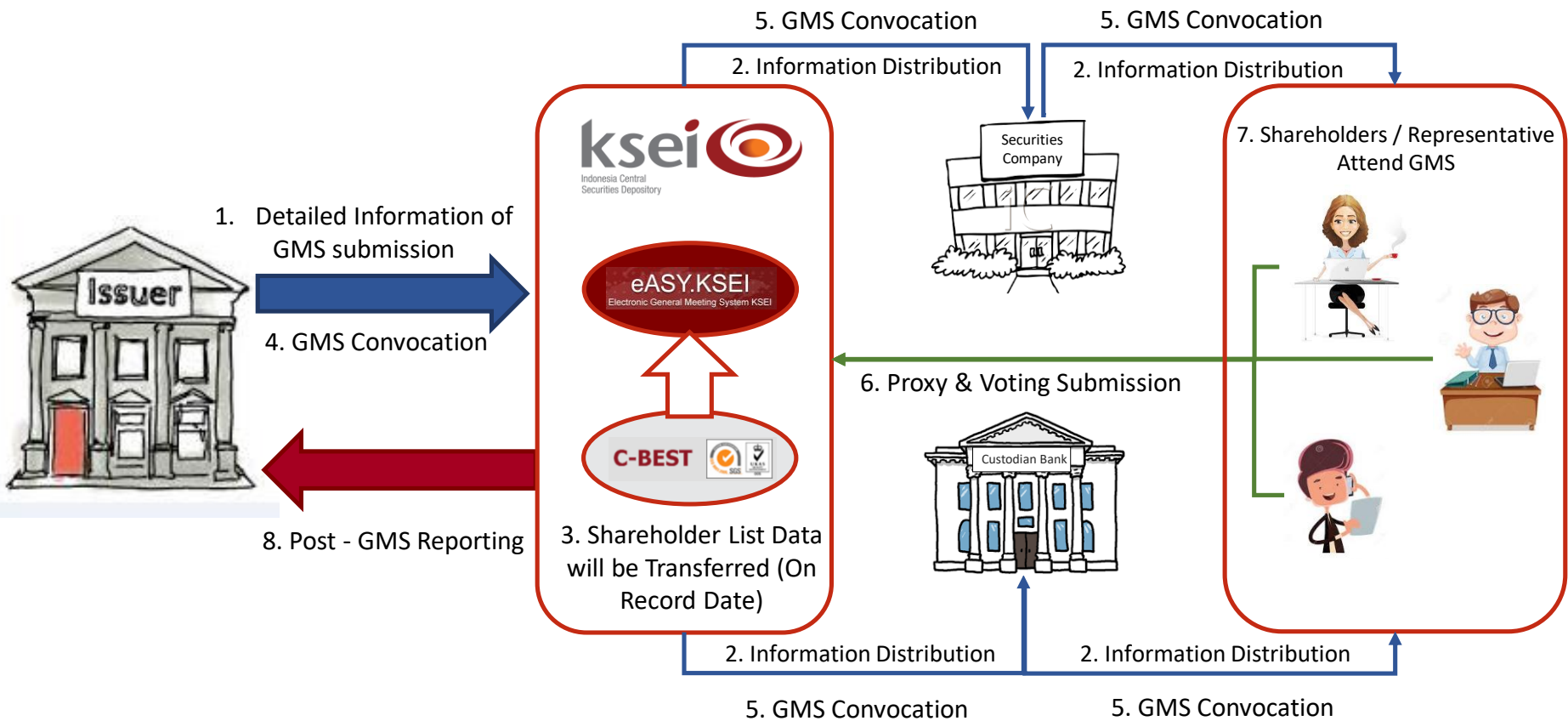
## Participants



## Participant Registration

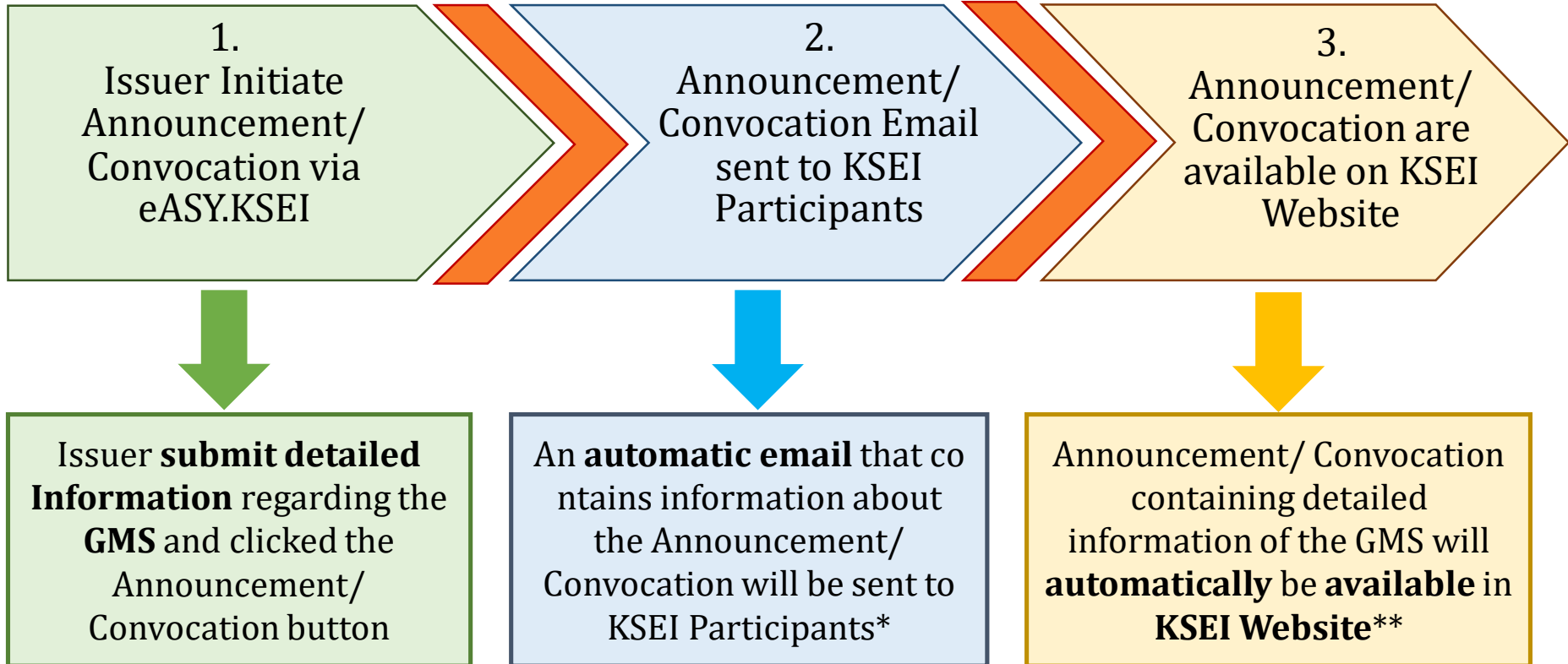


**Notes:** To Access *e-Proxy and e-Voting Platform*, Shareholders and individual representatives log in through KSEI AKSes facility (<https://akses.ksei.co.id/>)



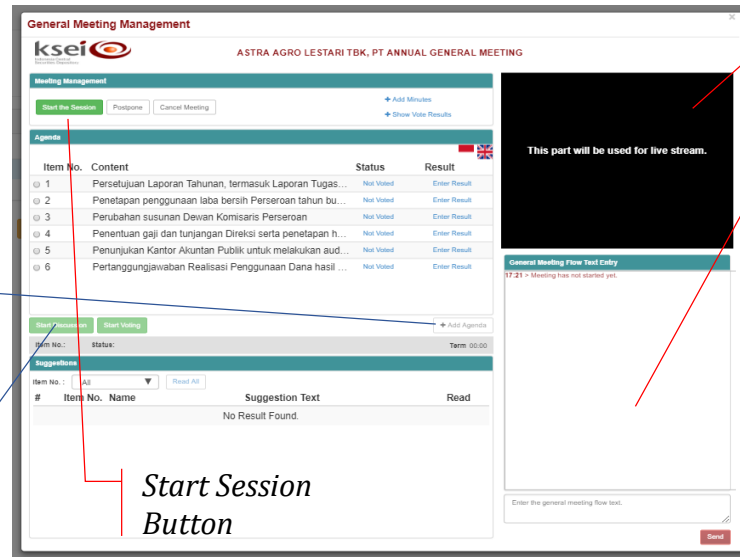
**Notes:**

- Electronic Proxy & Voting Submission
- Integrated System
- Standard Messages (robust, inter-operable and reusable Message)
- Expected Increase in Attendance and Participation level of Shareholders in GMS
- Information Distribution to various Parties: KSEI Participants, Media, Shareholders.



\* : GMS-Related Participants

\*\* : <https://www.ksei.co.id/publications/corporate-action-schedules/rups-rupo>



Additional meeting agenda at the GMS (if approved by all Shareholders)

Starts Discussion for each Agenda

Video streaming\*

Chatting box and meeting status

Start Session Button

## Electronic Voting Results

Physical Voting data that **has to be entered by the Issuer** based on the voting results of the GMS

Item No.	Local Code	Physical Attendees	Physical Approve	Physical Reject	Physical Abstain	Electronic Approve	Electronic Reject	Electronic Abstain
1	ASII		0	0	0	0	0	0

Click on the table to enter the physical results and the royalty rate.

Acceptance percentage: %

Total	Accept	Acceptance ratio	Reject	Reject ratio
ELECTRONIC	0	%0	0	%0
PHYSICAL	0	%0	0	%0
GRAND TOTAL	0	%0	0	%0

Electronic voting data sourced from KSEI database will be **automatically displayed** and cannot be changed.

Percentage to **determine the quorum** for meeting decisions\*\*

**Enter the Results** button has to be clicked after the Issuer input the final voting result & acceptance percentage data

\* : Will be Implemented early 2021

\*\* : Quorum Requirements for each Agenda might differ based on the Issuer's Article of Association & other applicable laws/regulations



Login to AKSes (*Securities Ownership Reference*) Facility:  
<https://akses.ksei.co.id>

Automatically Redirected & Logged-in to eASY.KSEI Platform (e-Proxy and e-Voting Platform):  
<https://easy.ksei.co.id/egken>

**MUSTAFA PAY SAHİPLERİ LİSTESİ TESTİ ŞİRKETİ, 23.03.2018, Extraordinary General Meeting**

**Attendance Type :**

I will attend in person by electronic means  My authorized representative will attend

**Representative Type :**

Individual Representative  Intermediary  Independent Representative

**Individual Representative**

Please enter the KTP/Passport number of your representative and click search

KTP/Passport Number :

User with KTP/Passport Number 18869751544 : Mustafa Akgün

**Authority Type :**

Select representative authorization type.

General authority  Special authority, submit voting instructions

Agenda No.	Content	Accepted / Rejected / Abstain
1	Opening and election of chair council.	<input type="radio"/> Accept <input type="radio"/> Reject <input checked="" type="radio"/> Abstain
2	Reading out and discussion of the Annual Report of Board of Directors.	<input type="radio"/> Accept <input type="radio"/> Reject <input type="radio"/> Abstain
3	Reading out Audit Report.	<input type="radio"/> Accept <input type="radio"/> Reject <input type="radio"/> Abstain
4	Reading out, discussion and approval of financial statements.	<input type="radio"/> Accept <input type="radio"/> Reject <input type="radio"/> Abstain

Representative Type Options:

1. Individual Representative
2. Intermediary (Securities Company/Custodian Bank)
3. Independent Representative (chosen by the Issuer)

Identification of Individual Representatives through the Identity Card (*KTP*) / Passport number stored in KSEI' database

Authority Type for the Representative:

- *General authority*
- *Special authority*

Shareholders can declare their vote through the screen by selecting the available voting options (accept / reject / abstain) on each Agenda

## Notes:

- Once the shareholder clicked the "save" button on the Vote Preference Declaration page, the votes will be recorded and there will be a pop-up notification message of: "Votes are recorded"
- The shareholder have an option to go out of the page and did not save their vote by clicking the "Exit Without Saving" button.



**966 General Meetings**

622 AGMs  
344 EGMs

**4.589,570 Shareholders\*\***

**631 Issuers**

\* All data shown above are dated as of November 24<sup>th</sup>, 2020 (data recording start date: April 20<sup>th</sup>, 2020)

\*\* : Total Number of entitled Account Holder recorded (Account Holder may appear more than once for different securities or GMS type)



PT Kustodian Sentral Efek Indonesia  
Gedung Bursa Efek Indonesia Tower 1 Lt.5  
Jl. Jend Sudirman Kav. 52-53, Jakarta 12190  
Call Center: (62-21) 515 2855  
Toll Free: 0800 186 5734

 [www.ksei.co.id](http://www.ksei.co.id)

 [@ksei.official](https://www.instagram.com/ksei.official)